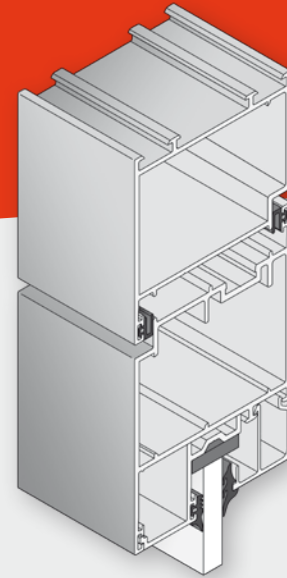


# AA 611 RS

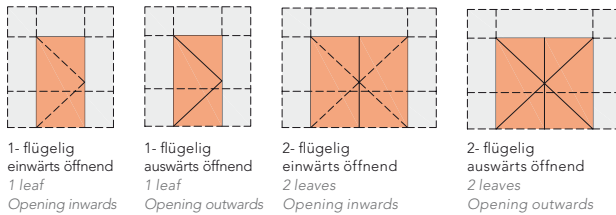
## Ganzaluminium Türsystem für Rauchschutztüren Non Thermal Broken System for Smoke Control Doors



### Güteprüfungen Performance

Rauchschutztüren Smoke Control Doors	DIN 18095 DIN 18095
Verglasungsarbeiten Glazing Works	DIN 18361 DIN 18361
Anforderungen an Fluchttürsysteme: Notausgänge Anti-Paniktüren Requirements to Escape Door Systems: Fire Escape Anti-Panik Doors	DIN EN 179 DIN EN 1125 DIN EN 179 DIN EN 1125
Qualitätsmanagementsysteme Quality Management Systems	Zertifiziert nach DIN EN ISO 9001 Certified according to DIN EN ISO 9001

### Bauarten Construction Types



1-flügelig einwärts öffnend  
1 leaf Opening inwards  
1-flügelig auswärts öffnend  
1 leaf Opening outwards  
2-flügelig einwärts öffnend  
2 leaves Opening inwards  
2-flügelig auswärts öffnend  
2 leaves Opening outwards

### Innenelemente Interior Elements

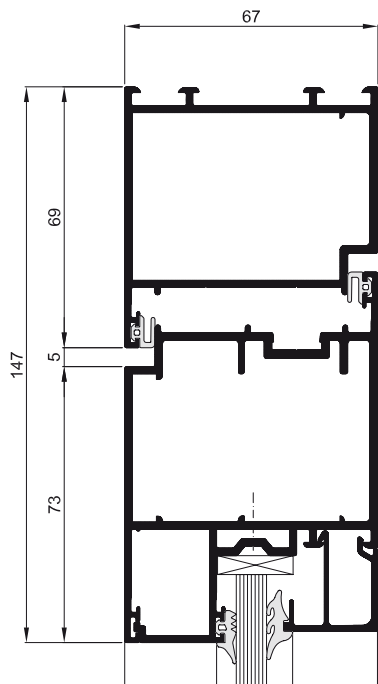
#### AA 611 RS

##### Rahmen/Flügel Standard

- ▶ Mittenverglasung
- ▶ 1-flg. oder 2-flg. einwärts öffnend

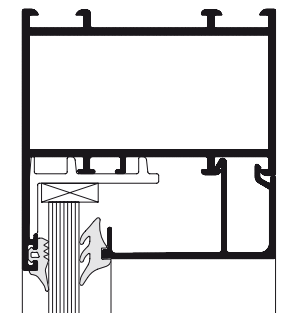
##### Frame/Leaf Standard

- ▶ Central glazing
- ▶ 1 or 2 leaves opening inwards



#### AA 611 RS

##### Optional Standardverglasung Optional Standard Glazing



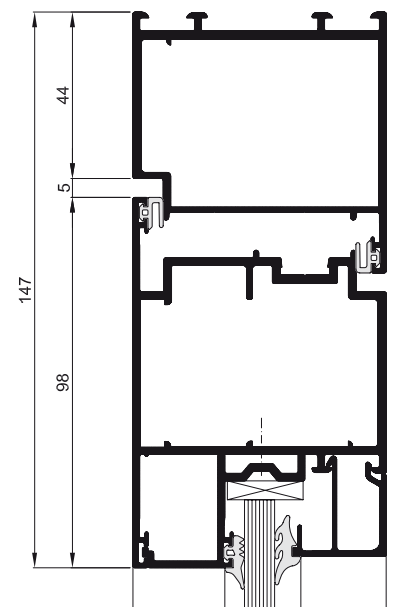
#### AA 611 RS

##### Rahmen/Flügel Standard

- ▶ Mittenverglasung
- ▶ 1-flg. oder 2-flg. auswärts öffnend

##### Frame/Leaf Standard

- ▶ Central glazing
- ▶ 1 or 2 leaves opening outwards





Cramersche Fabrik, Menden – Deutschland  
Cramersche Fabrik, Menden – Germany

**Bodenabschlüsse**  
*Door Bottom*

**AA 611 RS**

**Sockel – Standard**

- ▶ ohne Schwelle
- ▶ einwärts/auswärts öffnend
- ▶ Bodendichtung mit auto-  
matischer Absenkung

**Base – Standard**

- ▶ *without threshold*
- ▶ *opening inwards/outwards*
- ▶ *floor seal with automatic lowering*

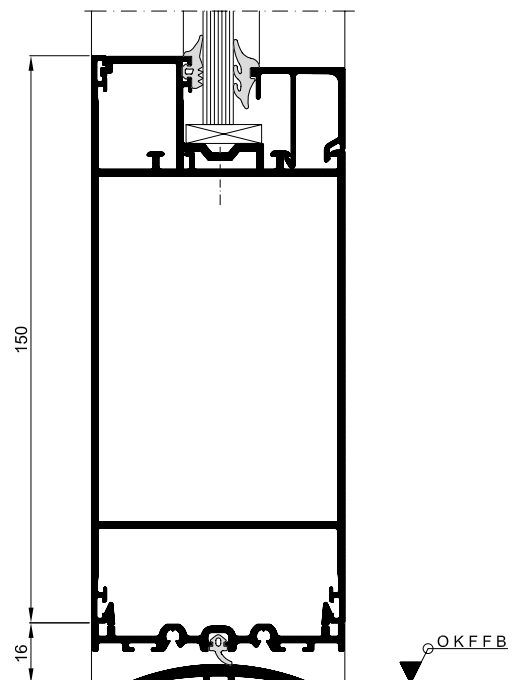
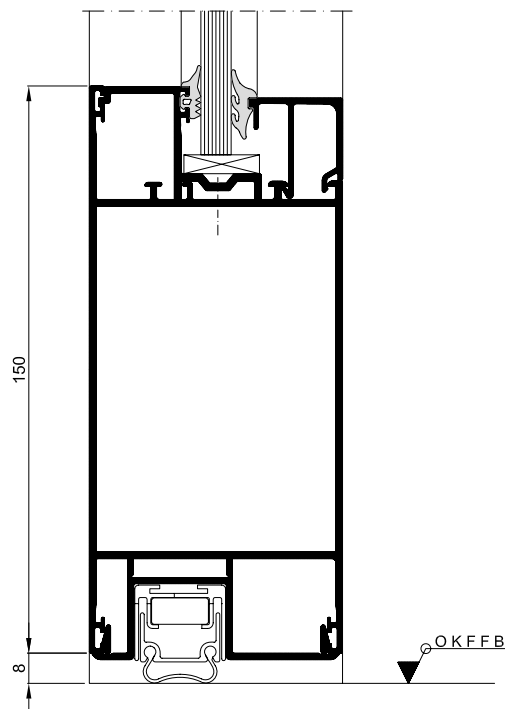
**AA 611 RS**

**Sockel – Standard**

- ▶ einwärts/auswärts öffnend
- ▶ Schwelle und Schleifdichtung

**Base – Standard**

- ▶ *opening inwards/outwards*
- ▶ *threshold and weather pile sealing*



Maßstab 1:2  
Scale 1:2